



ELCHO SCHOOL DISTRICT

2016 REFERENDUM FACT SHEET

QUESTION 1:

Shall the School District of Elcho, Langlade and Oneida Counties, Wisconsin be authorized to issue pursuant to Chapter 67 of the Wisconsin Statutes, general obligation bonds in an amount not to exceed \$18,000,000 for the public purpose of paying the cost of additions, renovations, remodeling and replacement of portions of the existing District building; related site improvements; and the acquisition of furnishings, fixtures and equipment?

QUESTION 2:

Shall the School District of Elcho, Langlade and Oneida Counties, Wisconsin be authorized to exceed the revenue limit specified in Section 121.91, Wisconsin Statutes, by \$500,000 per year beginning with the 2017-2018 school year and ending with the 2020-2021 school year, for non-recurring purposes consisting of operational expenses?

WHY NOW?

In the Spring of 2015, the District hired a team of architects and engineers to conduct a facility conditions assessment of the existing facility. After **extensive on-site observation and documentation**, it was determined that the district's facilities are facing several challenges. The current elementary building (built in 1938) has structural issues, aging boilers, roofs, cafeteria, locker rooms, classrooms and bathrooms, along with outdated plumbing and electrical systems throughout the entire facility. There are also many other issues to consider such as ADA compliances, a lack of parking, and educational program needs. In addition, the District has had to address an ongoing revenue deficiency resulting from state revenue limits. This has been possible since 2008 by support of our tax payers to allow us to exceed this limit.

After consideration of these **physical conditions, costs associated with repairs, and looking toward the current and future educational programming**, the school board, administration, a community member-based Facilities Task Force, and the architectural design team began to develop concepts to address the overall district needs. Each concept took into consideration the overall impact on tax payers as well as the impact on the safety of students and their educational needs. Since the District will be debt free in 2017, and interest rates are currently at historic lows, the district has decided to address these facility concerns with these two referenda questions listed above.

Historically, the district has made it a priority to use tax payers money as efficiently as possible. As a result the School District of Elcho's tax payers have the **13th lowest mill rate in the state**, which is currently at \$6.14.

Proper planning for the future and community involvement are essential to maintaining quality facilities and educational programs. **Please remember to vote on Tuesday, November 8th.**



ELCHO SCHOOL DISTRICT

2016 REFERENDUM FACT SHEET

FACILITY ISSUES:

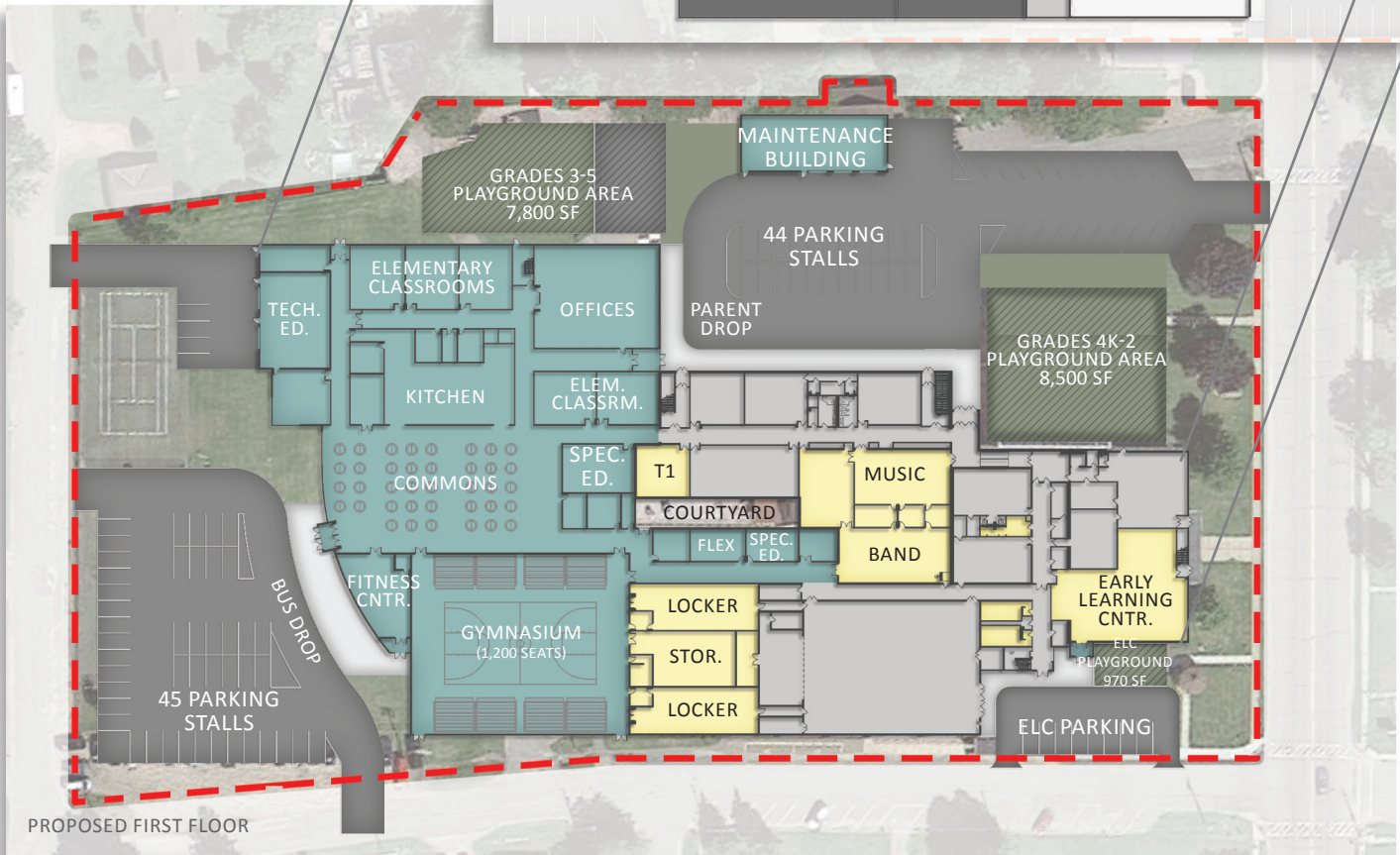
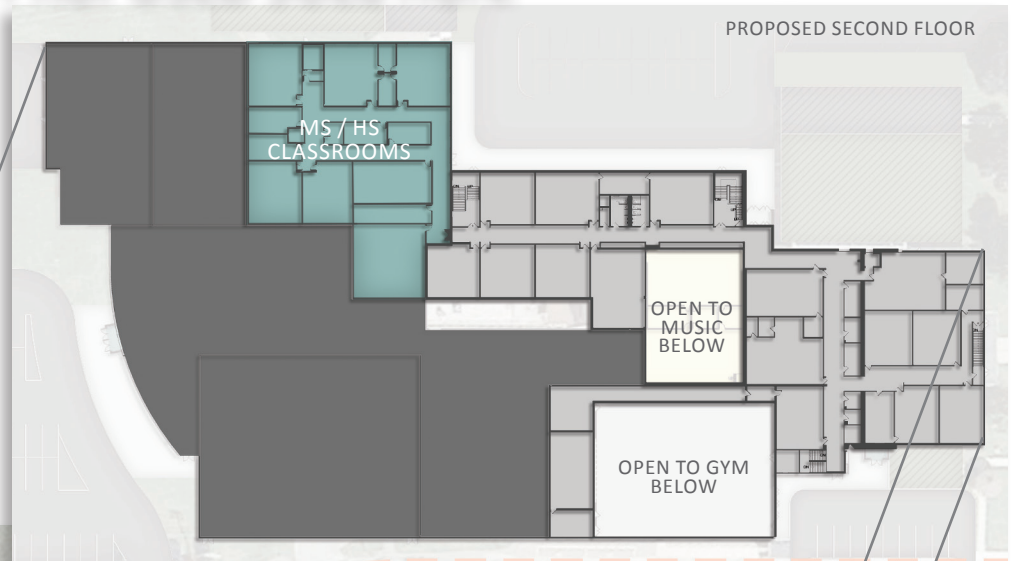
- 1938 building structural issues
- Boilers are 48 and 63 years old
- Mechanical originates in the 1938 building and extends into the 1966 building
- Parking, building access, and field access are safety issues
- ADA issues exist throughout the building
- 1966 remodeling issues: roofs, bathrooms, locker rooms, entry way
- Paving, HVAC, electrical and plumbing issues that will need to be addressed in the next 1-3 years
- Technology and telephone upgrades needed

Special thanks to our Facilities Task Force members:

Wendy DeNamur • Dick Dvorak • Mary Guenther • Deb Hatfield
 Bob Jensen • Mike Novak • Ron Remiker • Rick Theilman • Dave Visser

PROPOSED SOLUTION:

REMODELING
 NEW CONSTRUCTION



VOTE:

TUESDAY
NOVEMBER 8TH

3D RENDERING OF PROPOSED ELEMENTARY AND OFFICE ENTRY



3D RENDERING OF PROPOSED COMMONS ENTRY

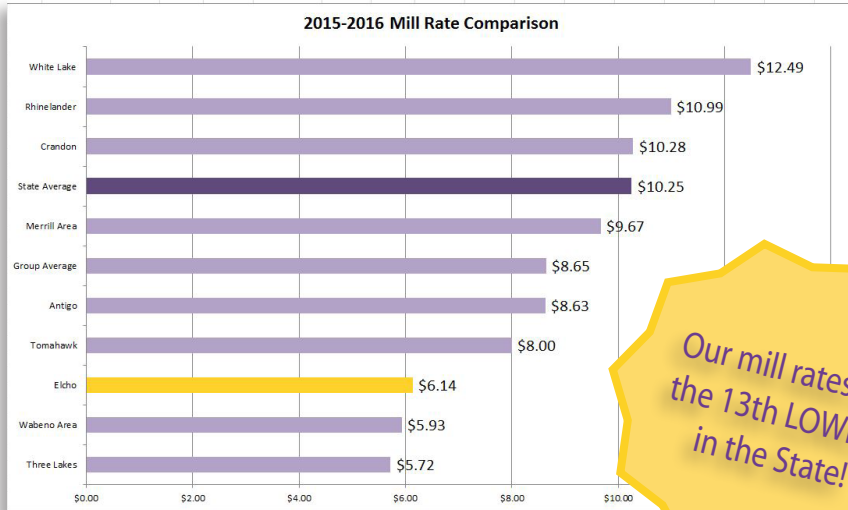




ELCHO SCHOOL DISTRICT 2016 REFERENDUM FACT SHEET

VOTE: TUESDAY NOVEMBER 8TH

HOW DO OUR TAXES COMPARE TO OTHERS?

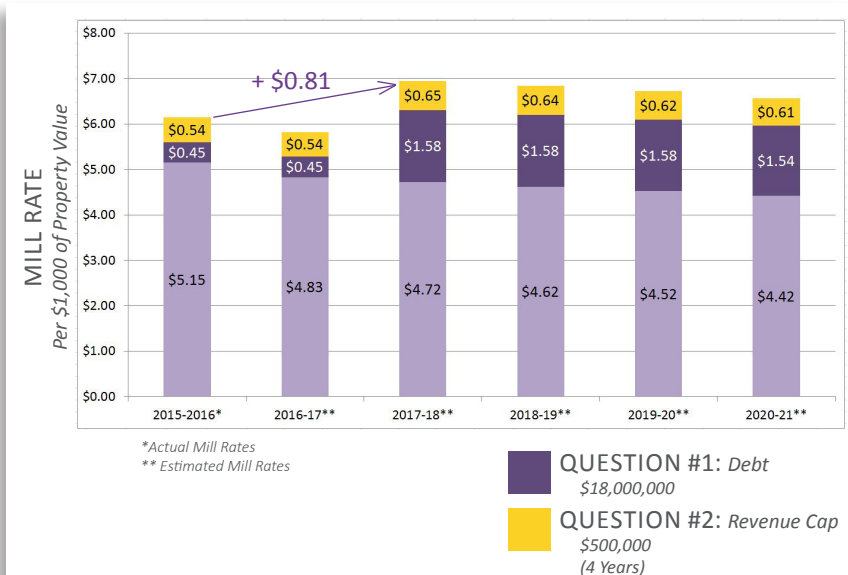


Our mill rates are the 13th LOWEST in the State!

HOW WILL MY TAXES BE AFFECTED?

\$0.81 PER THOUSAND	Total for Both Questions:	
	Estimated average property tax increase over current taxes	
Estimated Average Tax Impact:	Average Annual	Average Per Month
\$100,000 of property value	\$81.00	\$6.75

ESTIMATED REFERENDUM TAX IMPACTS:



LEARN MORE ABOUT THE REFERENDUM:

ATTEND AN INFORMATION SESSION:

- Tuesday, October 4th
Town of Upham
7:00PM
- Wednesday, October 5
Community Meeting, School Theater
6:30pm
- Thursday, October 6th
Pelican Lake Women's Club
1:00pm
- Thursday, October 6th
Town of Enterprise
6:30pm
- Monday, October 10th
Town of Schoepke
6:30pm
- Wednesday, October 12th
Elcho Senior Citizen Mealsite
12:15pm
- Wednesday, October 12th
PLIA (Post Lake Improvement Assoc.)
6:00pm

- Monday, October 17th
American Legion
7:00pm
- Thursday, October 20th
Town of Elcho
7:00pm
- Thursday, October 27th
Morning Show with Gary Hartl
8:10am

CONNECT WITH US:

<http://elcho.k12.wi.us/>
<https://www.facebook.com/elchoschooldistrict>
<https://twitter.com/elchohorns>